

*A Pedagogy for a Hopeful World:
Power, Action, and the Importance of Civic Leadership*

Saturday 27th February
15:15 – 16:15





REPORT

Global Satisfaction with Democracy 2020



‘Across the globe, democracy is in a state of malaise. [...] We find that dissatisfaction with democracy has risen over time, and is reaching an all-time global high, in particular in developed countries.’

School Trusts as New Civic Structures

A Framework Document



'We all know that the attainment gap doesn't start in the classroom. It finds its source beyond the school gates: inadequate housing, issues of unemployment, issues of poverty, issues compounded by a lack of investment, health inequalities, and many more.'

We are all aware that the systemic hurdles many of our children and families face are the reason why we live in such an unequal society.

Catching up is like sticking a plaster on a wound; it is reactionary. Our civic work should focus on addressing the root causes; it should be preventative.'

@sebchapleau

citizens^{uk}

WE KNOW ALL THAT

SOCIAL ACTION

@sebchapeau

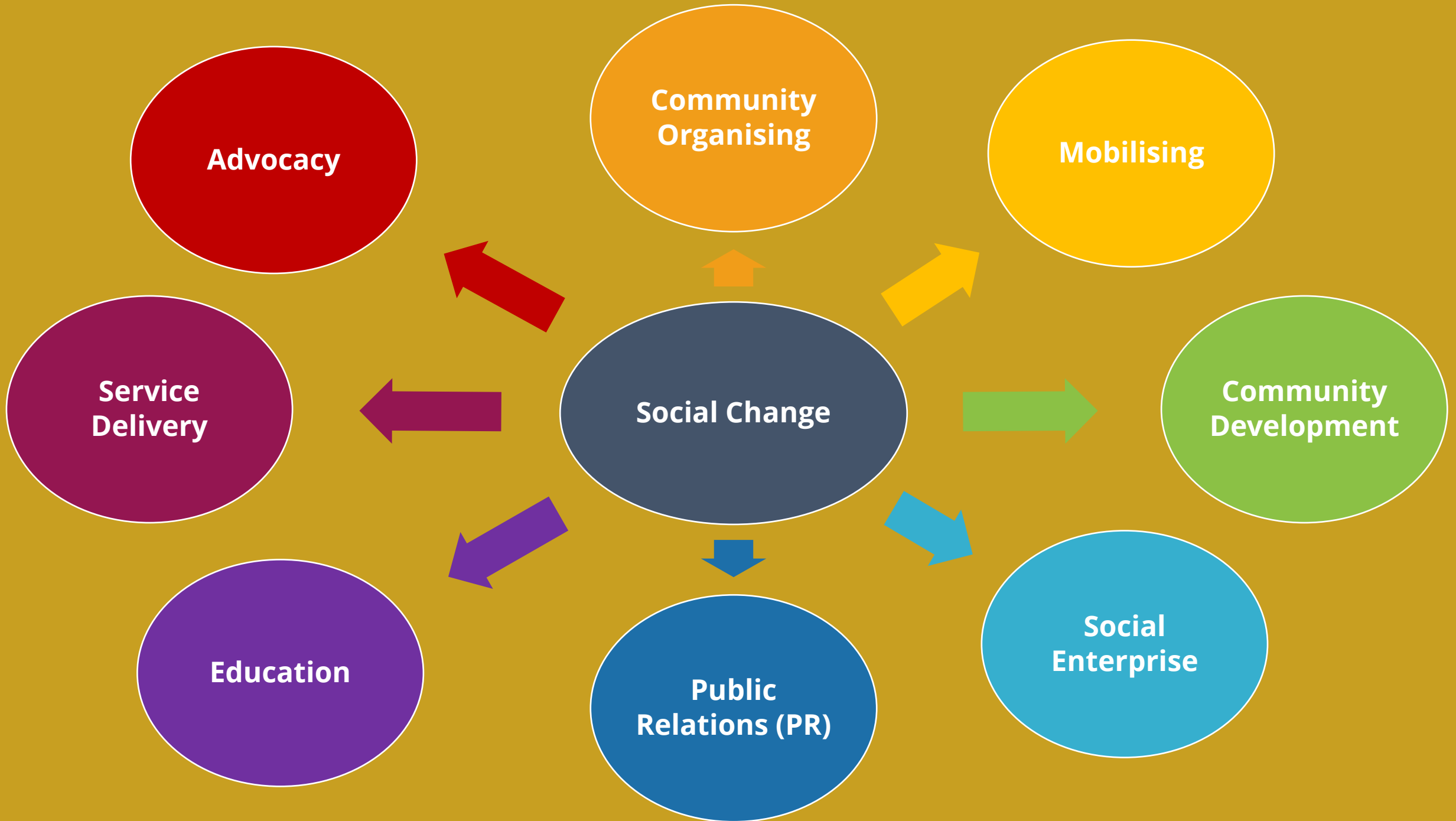
citizens^{uk}

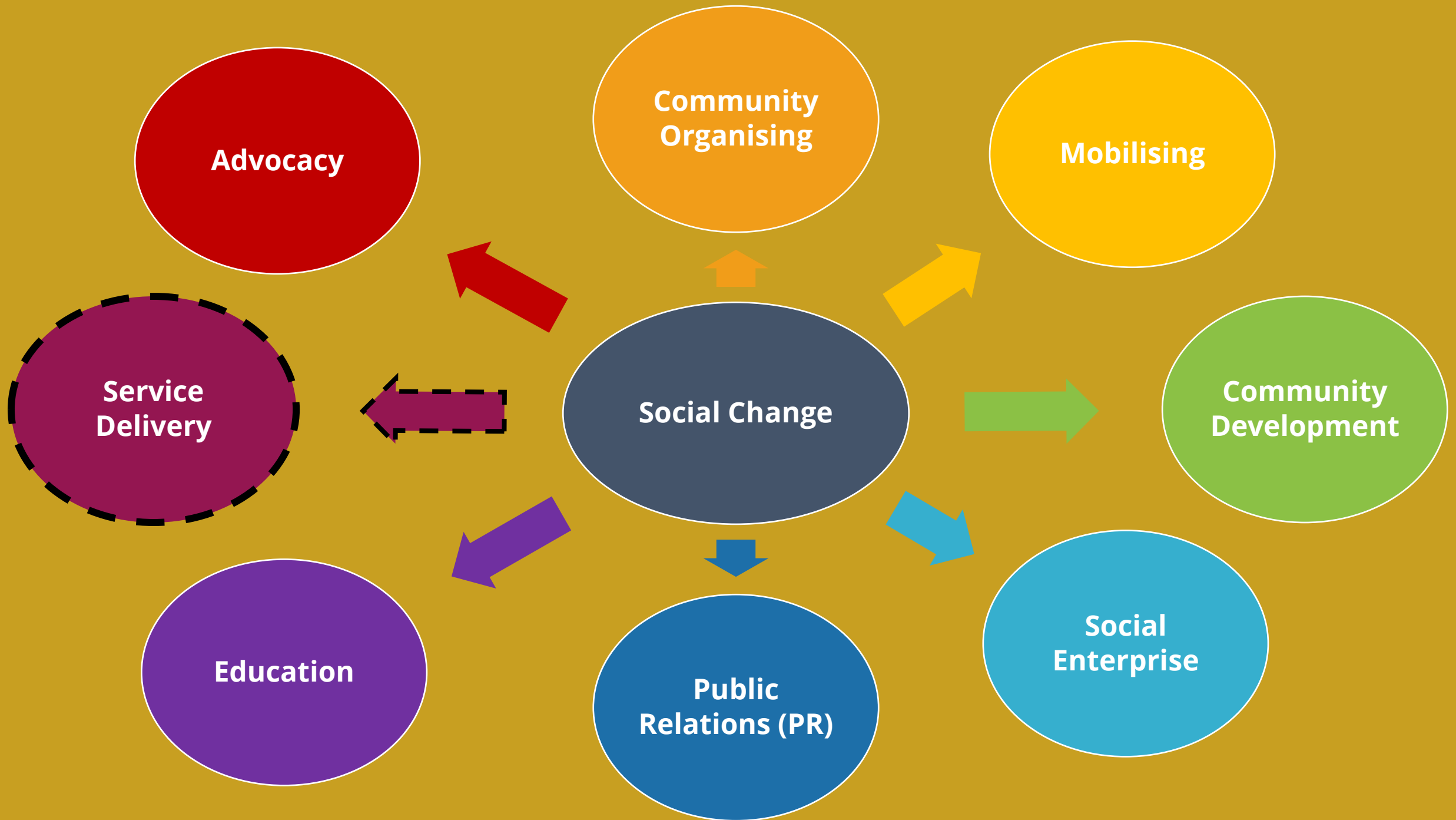
SOCIAL ACTION

FIRST: SMALL STEPS

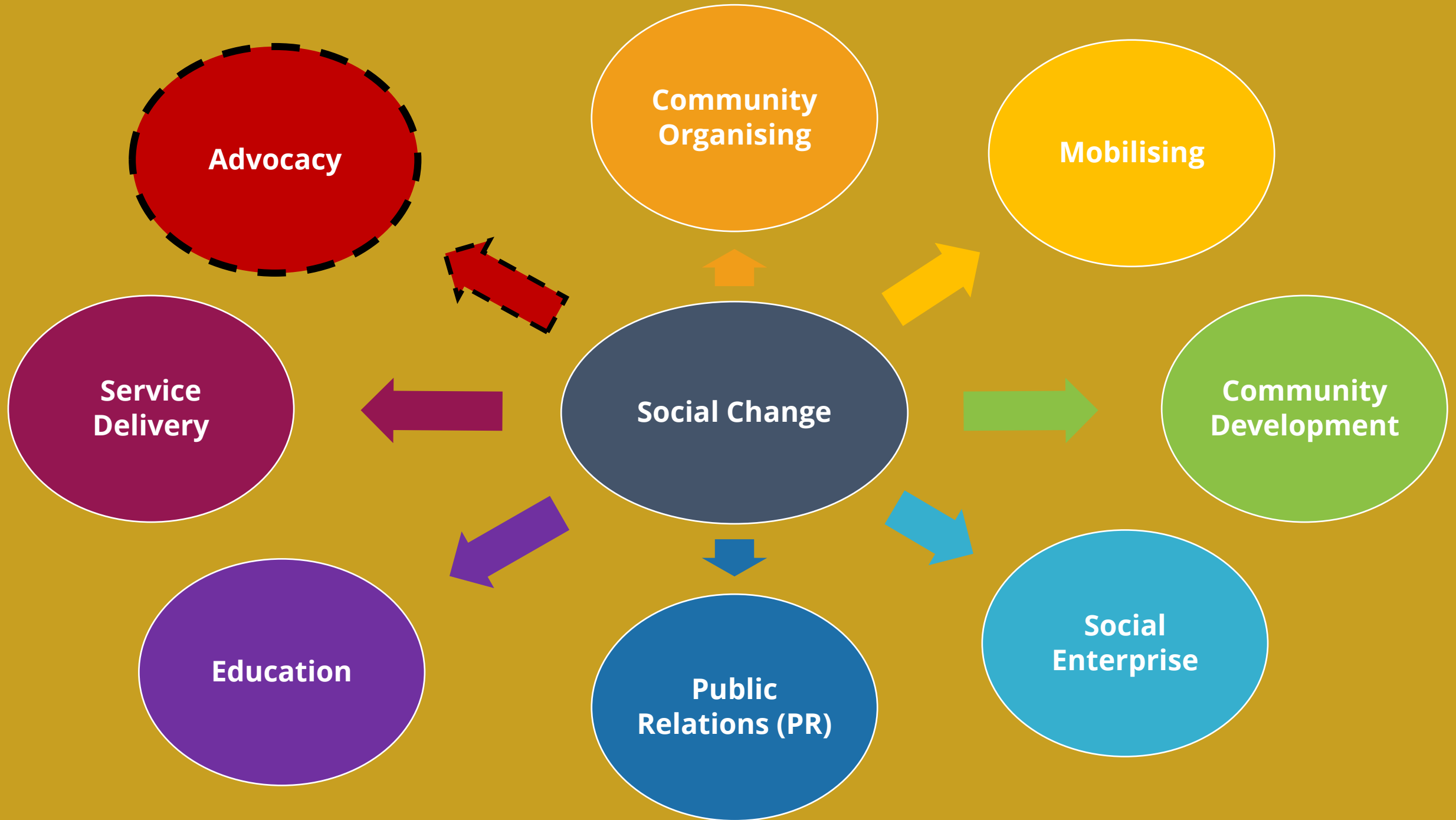
THEN: SYSTEM CHANGE

WHAT IS COMMUNITY ORGANISING?














BUILDING PERMANENT POWER

@sebchapeau

citizens^{uk}

A video still showing Ernesto Cortes, Jr. speaking at a podium. He is an older man with glasses, wearing a dark blue sweater over a collared shirt. He is looking down at a laptop on the podium. The background is a plain, light-colored wall.

Ernesto Cortes, Jr.
Co-Director, Industrial Areas Foundation

Harvard Conference on Education Reform
"A Match on Dry Grass"

What makes Community Organising distinctive?

- *3 complementary aims*



**Develop
Leaders**



**Strengthen
Organisations**



**Structural
Change**





Charlotte Wood
Co-Chair of Citizens UK Council

Fabrizio Des Figueiredo
Co-Chair of Citizens UK Council

Jamari Mendenhall

Rev Paul Rogers
Acting Chair of the Citizens
UK Board of Trustees



HOW DOES THIS WORK IN PRACTICE?

START SMALL



La Fontaine

ACADEMY

Always aiming higher, together

EXCELLENCE | RESPECT | COLLABORATION | RESPONSIBILITY | CREATIVITY

"On three separate occasions my son and I have almost been hit by cars travelling at speed along Homesdale Road on the curve at the end of Liddon Road."

"Almost impossible to cross from Page Heath Lane to Cannon Road due to non stop traffic, lack of crossing. Very scary point and almost trying to do your best to avoid being hit by a car."

"I feel it's much safer to drive to school than walk. It's just not safe enough to walk, sadly!"



impact@lafontaineacademy.org

www.lafontaineacademy.org/safety-campaign

 [@fontaineacademy](https://twitter.com/fontaineacademy)



Always aiming higher, together

EXCELLENCE | RESPECT | COLLABORATION | RESPONSIBILITY | CREATIVITY

@sebchapeau

"On three separate occasions my son and I have almost been hit by cars travelling at speed along Homesdale Road on the curve at the end of Liddon Road."

"It's almost impossible to cross from Page Heath Lane to Cannon Road due to non-stop traffic and the lack of a crossing. It's a very scary point. We are just trying our best to avoid being hit by cars."

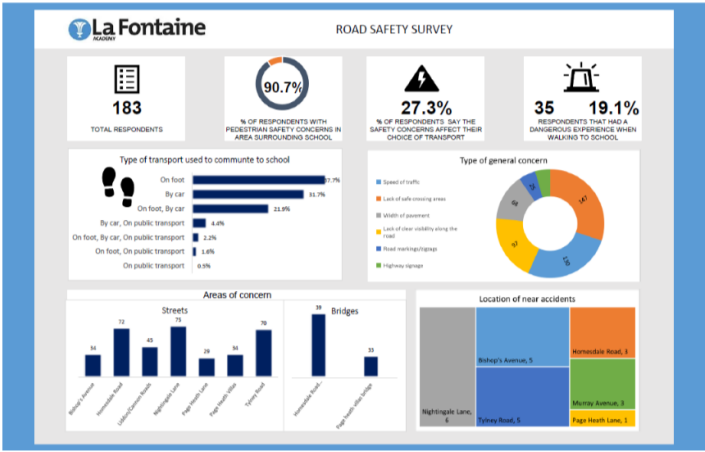
"I feel it's much safer to drive to school than walk. It's just not safe enough to walk, sadly!"

On Friday 9th March, 2018, we officially launched our **ROAD SAFETY CAMPAIGN**.

30 parents met to discuss how to best tackle some of the issues many of us face on our way to school in the morning.

As a school committed to developing leaders who can shape the world for the better, it feels right to get stuck in as many of us have experienced near-miss accidents due to dangerous road near our school.

We've committed ourselves to finding out more and have therefore launched a '**COMMUNITY-LED REVIEW**' of road safety issues. We surveyed all our families. We've also got families from Bickley Primary School involved.



LA FONTAINE ACADEMY – ROAD SAFETY CAMPAIGN

We are grateful to the 183 families who took the time to share their opinions and experiences. The data gathered represents views from La Fontaine and Bickley Primary communities (60%/40%).

In summary:

90% of all participants said that they are concerned about the safety of pedestrians, traveling to/from school, in the local area. The two dominant areas of concern relate to a **lack of safe crossing places** and the **general speed of traffic**. **The lack of good visibility along the road is also a significant problem.**

We were shocked to learn that **1 in 5 families** have experienced a **dangerous incident** whilst travelling to/from school.

As a result, 27% of people responded by saying that **safety concerns influence their choice of transport to school**, with a significant number of people choosing to drive when they could use other means of transport.

Given that the families responding to the survey approach the schools from all directions, we expected to see a wider number of areas of concern. The data shows that **incidents of danger and areas of concern are closely linked**, focused along **Homesdale Road, Tyline Road and Nightingale Lane**.

What was more surprising is the significant number of **dangerous incidents reported on Bishop's Avenue** in relation to the slightly lower number of people expressing concern here. This could possibly be explained by a false 'perception of safety' by some, whereas in reality, the speed of traffic and poor visibility by the entrances to both schools, represent a real threat to pedestrians.

39 families expressed concern over the **footpath underneath Homesdale Road bridge**. The comments we have received ask for slower traffic speeds here.

At present, 68% of families are choosing to **travel to school on foot** or by public transport/and on foot.

The emphasis is now on **reducing the unacceptable daily risk for these children and their parents/carers/siblings**.

Families have asked for:

- 1 Safer crossing points
- 1 Better visibility near junctions
- 1 A reduction in traffic speeds to 20mph
- 1 Improved signage for road users.

As a school, we will:

- 1 Work proactively with Bromley Council to come up with shared strategies which meet everyone's needs.
- 1 Offer **all children walking to school a high-visibility garment**, to make them more visible when walking on narrow pavements or when trying to cross the road.
- 1 As soon as possible, employ a **lollipop person to assist crossing the road** near the Homesdale/Tyline roundabout, once we have received safety advice from the appropriate council team.



- 3) A further consideration is that as part of pedestrian and road safety improvements, the Council will shortly be introducing a Zebra Crossing in Homesdale Road, near to the junction with Page Heath Lane (see drawing). This will reduce parking in Homesdale Road by approximately eight vehicles, so you may wish to take this into account before making a decision on the proposed CPZ changes.
- Please be advised that there is a separate investigation underway at this time to establish views as to the siting of a second mini-roundabout or other possible junction improvement at the junction of Liddon & Homesdale Roads, which could result in an as yet unquantified further loss of parking bays in the vicinity (most likely 5 or 6 lost bays).

SYSTEM CHANGE

@sebchapleau

citizens^{uk}

Leaders

Trained and practice the key skills of Community Organising

You

Core Teams

Make sure an organisation participates in listening and action

5-10 people

Member Organisations

Pay dues and vote to set campaign priorities

34 in Leeds

500 across the UK

Chapters

Bring together local organisations to campaign for the common good

Leeds Citizens

Citizens UK

National charity, staff, residential training, national

Citizens UK



SCHOOLS IN THEIR COMMUNITIES

TAKING ACTION AND DEVELOPING CIVIC LIFE



Edited by Dr Sebastien Chapleau

Foreword by Dr Karen Edge

Postscript by Professor Liz Todd

A collaboration between
Citizen School and Big Education





HOW BIG IS YOUR JAR?



Keep in touch!

Sebastien Chapleau

@sebchapleau

seb.chapleau@citizensuk.org

citizens^{uk}